



# H<sup>2</sup> SERVER

## USER'S MANUAL



# Table of Contents

Thanks for purchasing **YW-1400T**.

Please read this manual in advance before using the machine for maintenance and proper use of the product. If a problem occurs, you can even resolve it correctly by carefully following this manual. This manual contains the product warranty, so please keep it safe.

## Product Introduction and Specification

Product Introduction	02
Specification	02

## Parts Identification and Functions

Parts Identification	03
----------------------	----

## How to Use

How to Use	04
Preparations before Using	04
Button Indicator and Function	05

## Safety Information 06~07

## Check Lists Before A/S Request 08

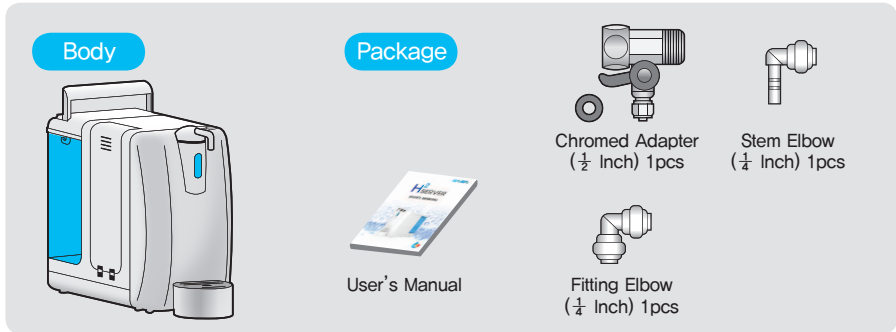
## Warranty 08



### Attention

- This appliance is not intended for use by persons (including children) with reduced physical, sensory or mental capabilities, or lack of experience and knowledge, unless they have been given supervision or instruction concerning use of the appliance by a person responsible for their safety.
- Children should be supervised to ensure that they do not play with the appliance.
- This appliance can be used by children aged from 8 years and above and persons with reduced physical, sensory or mental capabilities or lack of experience and knowledge if they have been given supervision or instruction concerning use of the appliance in a safe way and understand the hazards involved.
- Children shall not play with the appliance.
- Cleaning and user maintenance shall not be made by children without supervision.

### Product Introduction



### Specification

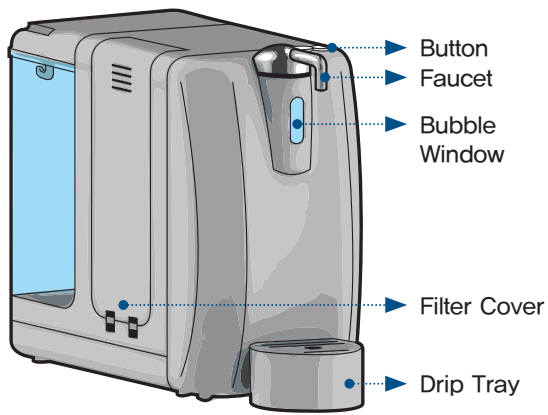
Product Name		Concentrated Hydrogen Water Generator
Model		YW-1400T
Size		175W x 420H x 300D
Power Consumption		100 V~, 50/60 Hz, 65 W
Weight		3.5kg
Hydrogen Water Output Rate		1ℓ /min total flow
Water Supply		Direct Connection to Tap Water, or Contained Water 4ℓ
Applicable Temp.		4 – 30°C
Water Pressure		10 – 50psi
Hydrogen Generator	Concentration of Dissolved Hydrogen	900ppb or more (depending on the type of raw water and temperature)
	Cleaning	Reversing Polarity(Cathode & Anode swapping)
	Material	Platinum, Titanium, Nafion, Tritan
	Hydrogen Dissolving Methods	Instantaneous intake dissolved method
Filter	Good for Filter	6 Months or 1,000ℓ
	Filter Replacement Alarm	When red light starts blinking
	Filter Material	Two Stage Filtration, Activated Carbon and Ceramic Ball

\* The unit has water leakage detector & filter replacement preinformation, with the blinking of red LED light.

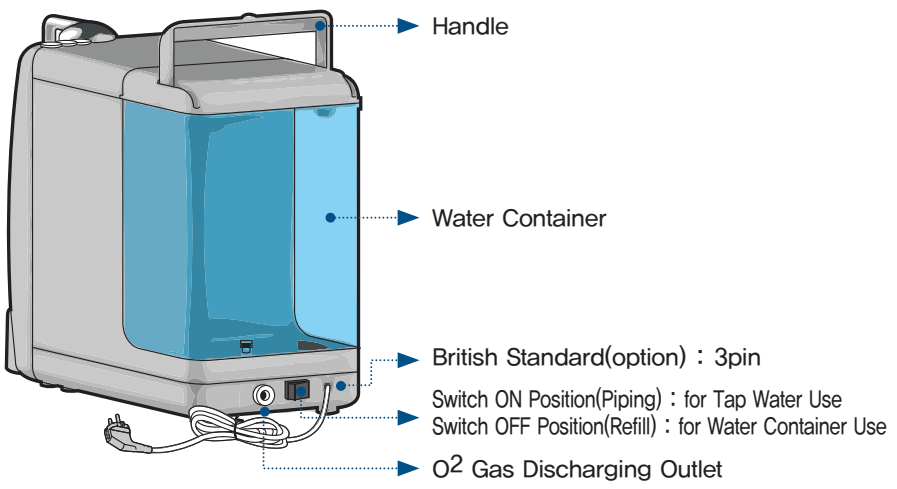
# Parts Identification and Functions

## Parts Identification

### FRONT



### BACK

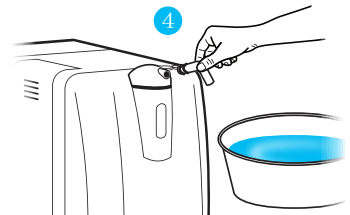
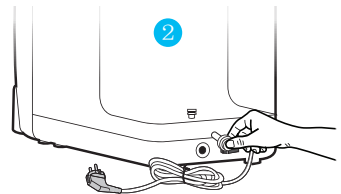


### How to Use

- This hydrogen water purifier offers good water in a stable and neutralized **PH**, which is the best use for drinking and washing vegetables, fruits, grains and etc, especially this water is very useful for cooking fishes that are easy to be oxidized.
- Read and become familiar with this precautions before operating the hydrogen generator.

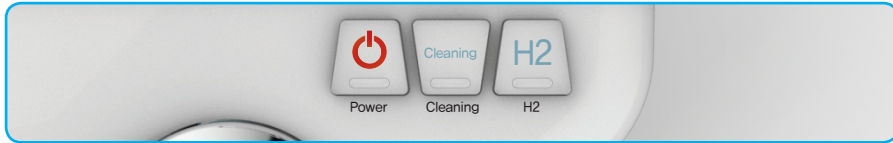
### Preparations before Using

- 1 Place the machine on a flat surface.
- 2 Remove the O<sup>2</sup> Plug end in the back side.
- 3 Fill water container with water.
- 4 Dip O-Ring(Faucet) in the pure water, and fix it back.
- 5 Plug in the power cord.
- 6 Press down the power button.
- 7 Press down the H<sub>2</sub> Button, then you can take drinking.
- 8 Please flush 1~3 cups of water before using.



# How to Use

## Button Indicator and Function



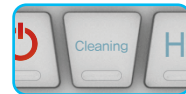
### • Power Button

TURN ON: Press down this button and then blue LED light comes on.  
TURN OFF: Press and hold this button again for 3 seconds.



### • Cleaning Button

Press down this button to clean electrolyzer.  
The red LED light blinks to alert when there is need of cleaning as you reach every 30ℓ used without letup. At this time, press down the cleaning button for 3 seconds. Then the machine will clean automatically for 25 seconds.  
Cleaning function can be used anytime you want to clean, regardless of regular cleaning alert explained above. In this case, you may press and hold the cleaning button for 3 seconds and then the red LED light blinks and the machine starts cleaning. \* (about 250cc drained in the time of cleaning)



### • H2 Button

Press down this button to extract the hydrogen water. Once you press this button, water is extracted with the blue LED light turning on. Stop water-extraction by pressing this button again. You can extract the hydrogen water for maximum one minute at once, though, you can repeat this process without limit.



- ① Press and hold the button for about 2 seconds until "Ding" sounds and immediately release the button. About 200ml of water comes out and stops.
- ② Even if you hear the first "Ding" sound, keep pressing the button for about 4 seconds, then, about 1000ml of water comes out and stops.

### Water Leakage Sensor (this is placed on the outer bottom surface)

If the water is leaked, the safety sensor placed on the outer bottom surface will detect it and the red and green LED light will blink alternately and the machine stops its operation. Disconnect the plug from socket and solve matters issued. Clean all the leaked water and the safety sensor, and connect the plug to the socket again.



### Filter Replacement

After about six months the filter has been used, red light blinks to alert the replacement of filter.

The lifespan of filter may be shortened if it is already passed the recommended usage (average daily 8ℓ ), or if you used tap water and non-filtered water. It is recommended to replace the filter frequently although the alert light does not blink. **(Recommended replacement: every two to three months)**

Water intake is possible without replacing the filter, but we recommend that you replace the filter for it may cause problems in the product.



### Reset

After replacing to the new filter, turn off the machine, then press and hold the H2 Button for 5 seconds.

### Water Container Cleaning

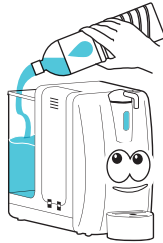
Turn off the power and lift up the water container handle, then the container will be separated from the body. Wash the container, and mount it again to the body.





### Attention

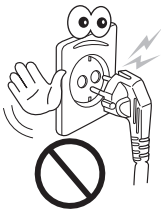
Please observe the following for safe use of the product.



#### • Usable Water:

- ① Purified Water
- ② Mineral Water
- ③ Tap Water

(for the best use, it is recommended to use ①purified water, and ②mineral water.)

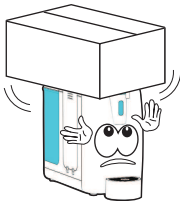


#### • Rated Voltage:

– AC 100 V~,  
50/60 Hz



• Place the product on a flat surface.



• Do not place heavy objects on the product body.

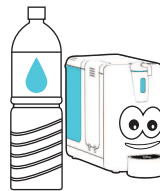


• Use it in a place free from water or moisture.  
(Leak sensor may detect it, then the machine stops operation.)



#### • Water Temperature:

– 5°C–20°C



• Use only **purified water, mineral water, or tap water.**

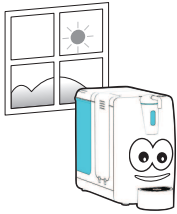
(Using improper water may cause serious damage or functional disorder to the parts.)

# Safety Information



## Attention

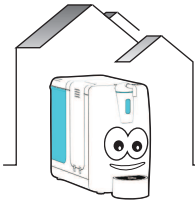
Please observe the following for safe use of the product.



- Place and keep the product in a well-ventilated area.



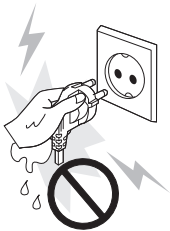
- Avoid using the product in a high temperature or near firearms around.



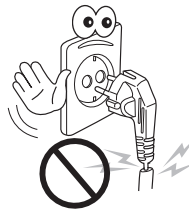
- The product must be used indoors at room temperature. (Avoid using it in temperatures well below freezing.)



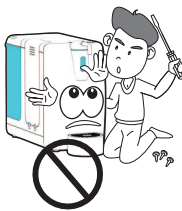
- Do not modify the machine or parts by yourselves without permission. Do not apply excessive force or impact.



- Do not touch the power plug with wet hands. (There is a risk of electric shock.)



- Never use the damaged cable, cord and power plug.



- If the power cord is damaged, do not touch or fix by yourselves. You must contact with the manufacturer or distributor or qualified repair technicians.



### Make sure before service request

In general use, rarely the product may not operate properly due to the inexperienced control or trivial causes, although it is not a defect or disorder of the product. In this case, check the following. If these suggestions do not help you to solve the problem, please contact the place of purchase or service center.

PROBLEM	TROUBLE SHOOT
If the power is not turned on	Please check rated voltage: – AC 100 V~, 50/60 Hz
If the bubble does not appear	Try again after pressing down the Cleaning Button. Replace the filter if it has been used for a long time. Dissolved hydrogen level is lesser in old filter
If the water does not come out	Make sure that the water container is filled with water. Make sure that in which side between 'ON(Tap Water Use) / OFF(Water Container Use)' switch is set on. Make sure that the filter is installed properly.
If the red LED continuously turns on, and never disappears	Turn off the power, and press and hold the H2 button for 5 seconds to reset, the problem will be solved after turning on the power again.

▶ [Contact for Filter Replacement :](#)



## WARRANTY



Product Name	Hydrogen Water Purifier (Generator)		
Model	YW-1400T		
Warranty Period	Factory 1 Year Warranty		
Date of Purchase	Day	Month	Year
Customer Name			
Customer Address			
Customer's Contact			
Place of Purchase			